

# Steam Train Charters



The perfect complement to Sandstone, a classic South African steam operated passenger train on the Bethlehem to Bloemfontein line. After your time on the 2 foot gauge Sandstone railway, enjoy a journey on the Cape Gauge line with numerous well planned photo opportunities.

The locomotive will be Class 12AR 1535, recently back in service after a four-year long overhaul. No.1535 'Susan' has the triple distinction of being the last surviving Class 12AR, Reefsteamers' oldest operating locomotive and the oldest operating main line locomotive in South Africa.

'Little Susie' was originally built as a Class 12A at the North British Locomotive Works way back in 1919.

The train will comprise coaches for the Reefsteamers fleet. There will be sleeper accommodation for 75 passengers, a lounge and dining car.

Accommodation is available in both Silver and Economy Class sleepers. Silver class has en-suite facilities and showers, economy class uses shared facilities.

To keep the train weight within limits for the locomotive, the full kitchen car will not be in the consist, meals will be wholesome and adequate with continental style breakfasts, packed lunches and traditional South African evening meals, normally potjiekos or barbecues. Reducing the kitchen capacity means that we can take along the lounge/bar car, the decision was not too difficult to make.

## **The Germiston to Bethlehem train**

The Reefsteamers train is based at the old Germiston steam depot on the outskirts of Johannesburg. In order to position it in Bethlehem for the start of the steam charter, it will travel from Germiston to Bethlehem behind modern traction, it is also possible to book space on the train from Germiston to Bethlehem, and to remain on board for the steam charter to Kimberley, from where it will again be hauled over the main line back to Germiston by modern traction.

## **Wednesday, 10 April 2019**

Make your way to Germiston this afternoon, where you will settle into your cabin and have time to explore the depot before a Braai (Barbecue) dinner amongst the locomotives. Spend the night on the coaches standing at Germiston. Dinner and overnight accommodation included.

### **Thursday, 11 April 2019**

Your journey starts this morning, with the travelling across the highveld to Bethlehem behind diesel electric traction. There will be occasional stops where the steam locomotive, in light steam, will be serviced. Breakfast, lunch and dinner will be served and the bar will be open. Overnight on the train at Bethlehem. Breakfast, lunch and dinner included.

### **Friday, 12 April 2019**

After an early breakfast, guests destined for the Sandstone family festival will leave the train and travel by coach to the Sandstone estate.

## **The Bethlehem – Bloemfontein – Kimberley – Johannesburg Train**

### **Friday, 12 April 2019**

Bethlehem to Modderpoort

Leave your hotel early this morning for a coach transfer to Bethlehem. Join a special steam train for your journey to Bloemfontein, Kimberley and Johannesburg. Runpasts will be arranged at locations selected by experienced organisers, the number being determined by the time available.

Overnight on the train standing in Modderpoort. Breakfast and dinner included. Lunch, light refreshments and bar will be available.

### **Saturday, 13 April 2019**

Modderpoort to Bloemfontein.

Today, our train will make a trip from Modderpoort to Bloemfontein.

Overnight on the train standing in Bloemfontein. Breakfast and dinner included. Lunch, light refreshments and bar will be available.

### **Sunday, 14 April 2019**

Bloemfontein to Kimberley

This morning, visit the Sandstone workshops and the national collection of locomotives at Bloemfontein.

This afternoon, our train will make the trip from Bloemfontein to Kimberley. Runpasts will be staged as the train steams west into the afternoon light.

Overnight on the train standing in Kimberley. Breakfast and dinner included. Lunch, light refreshments and bar will be available.

### **Monday, 15 April 2019**

Kimberley

Visit the Kimberley Big Hole Museum to explore the growth of the diamond industry. Your visit will include a tram ride and there are numerous railway and steam related exhibits. Later this morning, spend some time at the railway museum at Kimberley station, this small museum includes an exhibition hall with some interesting exhibits, as well as a platform display that includes a Class 25NC 4-8-4 locomotive.

After a break for lunch, visit local preservation group Steamnet 2000. If available, have their Class 25NC in steam for a short run and photographic opportunity.

Overnight on the train standing in Kimberley. Breakfast and dinner included. Lunch, light refreshments and bar will be available.

### **Tuesday, 16 April 2019**

Kimberley to Germiston

Our train and the steam locomotive will be hauled by Transnet freight Rail electric locomotives from Kimberley to Germiston as steam is not permitted on core routes. Three or four service stops will be needed, and photos may be possible, depending on the location and according to the safety rules.

The train will stable for the night in the Reefsteamers depot, offering an opportunity for night photography. Breakfast and dinner included. Lunch, light refreshments and bar will be available.

### **Wednesday, 17 April 2019**

Your tour ends after breakfast this morning with an included airport transfer

#### **Prices and conditions**

The prices listed here may change at any time due to cost increases or foreign currency adjustments. These prices assume that the access charges raised by Transnet for the use of their lines will be the same as at present with an allowance for anticipated inflation. Transnet only confirm a tour and their charges shortly before the tour date. If the access charges exceed the anticipated amount a surcharge may be added to your ticket to cover the increase. If Transnet decline the tour we will make every effort to offer you an acceptable alternative.

#### **Germiston to Bethlehem charter train: 10 to 12 April 2019**

##### **Silver class:**

**675 Euro** Per person sharing

**425 Euro** Single supplement for use of a twin cabin

##### **Economy class:**

**519 Euro** Per person sharing

**259 Euro** Supplement to leave one berth free in a three berth compartment.

Your package includes: Accommodation on the train for two nights. Dinner, lunch, bed and breakfast. Train travel between the Reefsteamers depot at Germiston and Bethlehem. The steam locomotive and train will be hauled by modern traction.

Your Package does not include: Meals not included in the programme. Transfers to Germiston depot. Items of a personal nature. Flights.

#### **Bethlehem to Germiston charter train: 12 to 17 April 2019**

##### **Silver class:**

**2.899 Euro** Per person sharing

**2.587 Euro** Single supplement for use of a twin cabin

##### **Economy class:**

**2.007 Euro** Per person sharing

**1.695 Euro** Supplement to leave one berth free in a three berth compartment.

Your package includes: Your transfer from hotel to Bethlehem. Accommodation on the train for up to five nights. Dinner, bed and breakfast. Visits to museums and Steamnet 2000 in Kimberley. Visits to Sandstone's Bloemfontein works and the national locomotive collection. Transfer from Germiston depot to OR Tambo airport.

Your Package does not include: Meals not included in the programme. Items of a personal nature. Flights.

##### **Meals:**

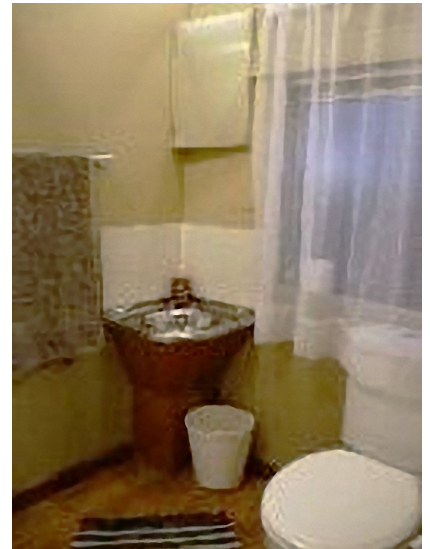
Breakfast is included in your booking, with a continental style dining car service. Lunch is not normally included, a light lunch can be ordered whilst on board. Dinners are included. Limited kitchen facilities dictate the type of meal served, this may be a braai (barbecue), traditional South African

potjiekos (a hearty stew) or something similar with salads and desert. Light refreshments and bar will be available throughout the day on the train.

Train accommodation:

There will be six sleeper coaches on the train. Three silver class coaches offer en-suite twin and single cabins. Three economy coaches offer shared showers and toilets, with single and three berth cabins. Supplements can reduce the number of occupants in three berth compartments.

▼ Silver class



◀ Economy class